

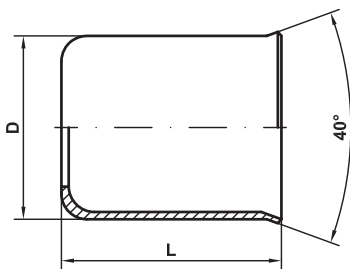
3.0. ČAURE ZA CREVA (FERRULES FOR HOSES)



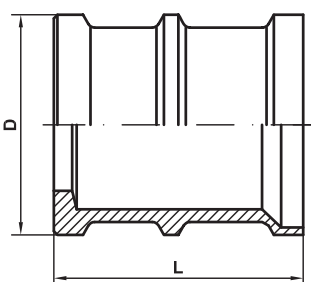
ČAURE
FERRULES

TIPA
TYPE

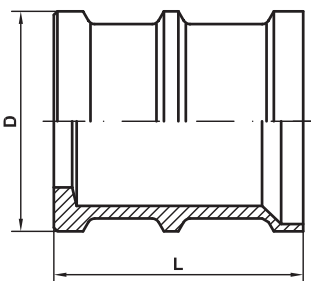
G^t_č, M, M^t_č, H



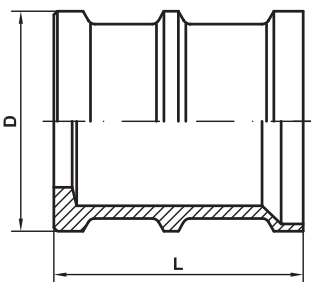
ŠIFRA CODE	Tip gume Type hose	hose ID				
		in	mm	DN	D	L
FIS 8001 NP4	G ^t _č	13/64	5,1	4	13	17
NP6	G ^t _č	9/32	7,1	6	15	17
NP8	G ^t _č	23/64	9,1	8	18	20
NP10	G ^t _č	7/16	11,1	10	21	25
NP13	G ^t _č	35/64	13,9	13	25	30



ŠIFRA CODE	Tip gume Type hose	hose ID					L	duž. blank. skive lenght
		in	mm	DN	D			
FIS 8034 NP4	M	3/16	4,8	4	17	27	NE (NO)	
NP6	M	1/4	6,4	6	18	30	NE (NO)	
NP8	M	5/16	7,9	8	20	32	NE (NO)	
NP10	M	3/8	9,5	10	22	32	NE (NO)	
NP13	M	1/2	12,7	13	26	34	NE (NO)	
NP16	M	5/8	15,9	16	30	37	NE (NO)	
NP20	M	3/4	19,0	20	35	43	NE (NO)	
NP25	M	1	25,4	25	42	52	NE (NO)	
NP32	M	1 1/4	31,8	32	50	59	NE (NO)	

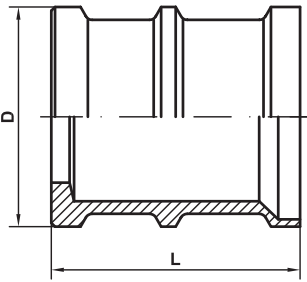


ŠIFRA CODE	Tip gume Type hose	hose ID					L	duž. blank. skive lenght
		in	mm	DN	D			
FIS 8032 NP4	M ^t _č	3/16	4,8	4	18	27	NE (NO)	
NP6	M ^t _č	1/4	6,4	6	20	30	NE (NO)	
FIS 8035 NP8	M ^t _č	5/16	7,9	8	22	32	NE (NO)	
NP10	M ^t _č	3/8	9,5	10	24	32	NE (NO)	
NP13	M ^t _č	1/2	12,7	13	27	34	NE (NO)	
NP16	M ^t _č	5/8	15,9	16	32	37	NE (NO)	
NP20	M ^t _č	3/4	19,0	20	36	43	NE (NO)	
NP25	M ^t _č	1	25,4	25	42	52	NE (NO)	
NP32	M ^t _č	1 1/4	31,8	32	50	59	NE (NO)	

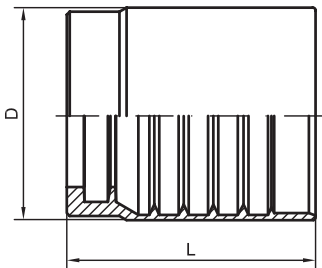


ŠIFRA CODE	Tip gume Type hose	hose ID					L	duž. blank. skive lenght
		in	mm	DN	D			
FIS 8032 NP4	H	3/16	4,8	4	18	27	NE (NO)	
NP6	H	1/4	6,4	6	20	30	NE (NO)	
NP8	H	5/16	7,9	8	24	32	NE (NO)	
NP10	H	3/8	9,5	10	26	32	NE (NO)	
NP13	H	1/2	12,7	13	30	34	NE (NO)	
NP16	H	5/8	15,9	16	34	37	NE (NO)	
NP20	H	3/4	19,0	20	40	43	NE (NO)	
NP25	H	1	25,4	25	46	52	NE (NO)	
NP32	H	1 1/4	31,8	32	53	59	NE (NO)	

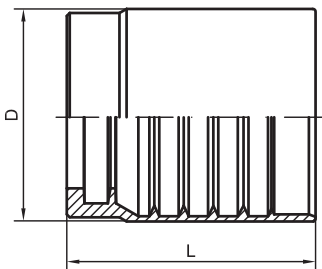




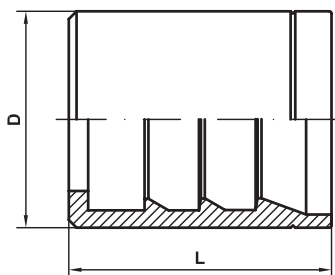
ŠIFRA CODE	Tip gume Type hose	hose ID				L	duž. blank. sklve lenght
		in	mm	DN	D		
FIS 8033 NP4	H ^t _č	3/16	4,8	4	20	27	NE (NO)
NP6	H ^t _č	1/4	6,4	6	22	30	NE (NO)
NP8	H ^t _č	5/16	7,9	8	25	32	NE (NO)
NP10	H ^t _č	3/8	9,5	10	27	32	NE (NO)
NP13	H ^t _č	1/2	12,7	13	32	34	NE (NO)
NP16	H ^t _č	5/8	12,7	16	36	37	NE (NO)
NP20	H ^t _č	3/4	19,0	20	40	43	NE (NO)
NP25	H ^t _č	1	12,7	25	50	52	NE (NO)
NP32	H ^t _č	1 1/4	31,8	32	56	59	NE (NO)



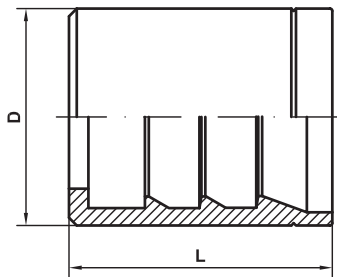
ŠIFRA CODE	Tip gume Type hose	hose ID				L	duž. blank. sklve lenght
		in	mm	DN	D		
FIS 8036 NP6	1SN,2SN,2SC	1/4	6,4	6	23	30	NE (NO)
NP8	1SN,2SN,2SC	5/16	7,9	8	24	30	NE (NO)
NP10	1SN,2SN,2SC	3/8	9,5	10	26	31	NE (NO)
NP13	1SN,2SN,2SC	1/2	12,7	13	30	32	NE (NO)
NP16	1SN,2SN,2SC	5/8	15,9	16	33	36	NE (NO)
NP20	1SN,2SN,2SC	3/4	19,0	20	37	42,5	NE (NO)
NP25	1SN,2SN,2SC	1	25,4	25	46	51	NE (NO)
FIS 8024 NP32	1SN	1 1/4	31,8	32	54	58	NE (NO)
FIS 8025 NP32	2SN	1 1/4	31,8	32	58	58	NE (NO)



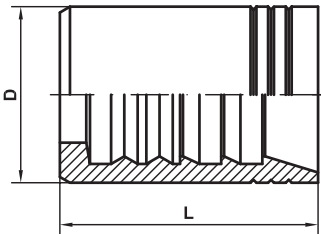
ŠIFRA CODE	Tip gume Type hose	hose ID				L	duž. blank. sklve lenght
		In	mm	DN	D		
FIS 8037 NP6	1SC	1/4	6,4	6	20	30	NE (NO)
NP8	1SC	5/16	7,9	8	22	30	NE (NO)
NP10	1SC	3/8	9,5	10	24	31	NE (NO)
NP13	1SC	1/2	12,7	13	28	32	NE (NO)
NP16	1SC	5/8	15,9	16	31	36	NE (NO)
NP20	1SC	3/4	19,0	20	34	42,5	NE (NO)
NP25	1SC	1	25,4	25	44	51	NE (NO)



ŠIFRA CODE	Tip gume Type hose	hose ID				L	duž. blank. sklve lenght
		In	mm	DN	D		
FIS 8038 NP6	1ST - 1SN	1/4	6,4	6	20	30	21
NP8	1ST - 1SN	5/16	7,9	8	22	32	23
NP10	1ST - 1SN	3/8	9,5	10	24	32	23
NP13	1ST - 1SN	1/2	12,7	13	28	34	25
NP16	1ST - 1SN	5/8	15,9	16	32	37	26
NP20	1ST - 1SN	3/4	19,0	20	36	43	31
NP25	1ST - 1SN	1	25,4	25	43	51	38
NP32	1ST - 1SN	1 1/4	31,8	32	50	59	45
NP40	1ST - 1SN	1 1/2	38,1	40	57	63	47
NP50	1ST - 1SN	2	50,8	50	72	70	60



ŠIFRA CODE	Tip gume Type hose	hose ID				duž. blank. skive lenght	
		in	mm	DN	D	L	
FIS 8039 NP6	2ST - 2SN	1/4	6,4	6	21	30	21
NP8	2ST - 2SN	5/16	7,9	8	24	32	23
NP10	2ST - 2SN	3/8	9,5	10	25	32	23
NP13	2ST - 2SN	1/2	12,7	13	30	34	25
NP16	2ST - 2SN	5/8	15,9	16	34	37	26
NP20	2ST - 2SN	3/4	19,0	20	38	43	31
NP25	2ST - 2SN	1	25,4	25	46	51	38
NP32	2ST - 2SN	1 1/4	31,8	32	55	59	45
NP40	2ST - 2SN	1 1/2	38,1	40	62	63	47
NP50	2ST - 2SN	2	50,8	50	75	70	60



ŠIFRA CODE	Tip gume Type hose	hose ID				duž. blank. skive lenght	
		In	mm	DN	D	L	
FIS 8010 NP10	4SP	3/8	9,5	10	25	44	35
NP13	4SP	1/2	12,7	13	30	44	35
NP16	4SP	5/8	15,9	16	32	51,5	43
NP20	4SP-4SH	3/4	19,0	20	38	52,5	43
NP25	4SP-4SH	1	25,4	25	45	65	54
NP32	4SH	1 1/4	31,8	32	53	65	54
NP40	4SH	1 1/2	38,1	40	62	74	64
NP50	4SH	2	50,8	50	78	74	64

